

CBD15 20-AH ALiH 步行式电动托盘搬运车 Electric pallet truck

产品性能特点:

- 整车简洁、可靠、易操作，标配直立行走功能，适合在狭小空间作业；
- 整车经过充分强化验证，可靠耐用；
- 预留电磁制动脚踏装置，保证车辆出现故障时能移走维修；
- 覆盖件采用内部固定方式，防止碰撞紧固螺栓，电池拆卸、维修方便；
- 标配内置充电器，随充随用，为客户提供便利；
- 全金属车身设计，全新PI造型，外观新颖，坚固耐撞；
- 一体化手柄设计，锂电车型标配智能手柄，(实现故障显示、密码锁、小时计、CAN通讯等)操作简单舒适；
- 电池容量大，续航能力强；
- 锂电车型采用手提式锂电池包，电池更换轻松、便捷；
- 标配急停开关和紧急反向装置，确保使用安全；
- 具备断刹车功能，手柄松开或压到底部，车辆立即断刹车；
- 行车制动采用电磁制动与电机制动双重保障，确保行车安全；
- 整车宽配置，可选配货叉长度、货叉宽度等；
- 可选配平衡轮，提升车身稳定性；
- 可选配转弯限速，提升操作安全性。

Characteristics:

- The vehicle is simple and reliable, easy to operate. It is standard with upright walking function, suitable for narrow space operation.
- Full experimental verification of the vehicle, reliable and durable;
- Electromagnetic brake unlocking device reversed to ensure that vehicles can be removed in case of the vehicle falls.
- The covering parts are fixed internally to prevent collisions with fastening bolts. The battery is easily to remove and maintain;
- Standard the internal charger, convenient for customers to charge.
- All metal body design, new PI shape, novel appearance, reliable and durable;
- Integrated handle, the lithium type is equipped with a smart handle, (Display the fault code in real time, coded lock, hour meter, CAN etc.), operation is simple and comfortable;
- Large battery capacity, strong endurance;
- The lithium type uses a portable lithium battery package, the battery replacement is easy and convenient;
- Standard the emergency stop switch and emergency reverse device to ensure the safety of use;
- With the power-off automatic brake function, the handle is loosen or pressed to the bottom, and the vehicle immediately powered off and braked;
- Driving braking uses the dual guarantee of electromagnetic braking and motor brake to ensure driving safety.
- The sufficient configuration of the vehicle, optional fork length, optional fork width, etc.
- Optional balance wheels to improve body stability;
- Optional turning speed limit to improve operational safety.

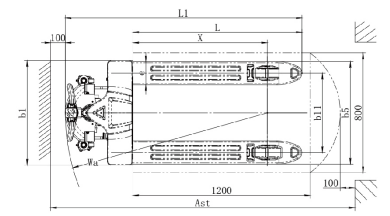
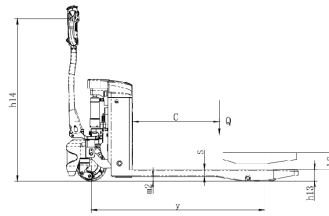


锂电池动力

CBD15 20-AH ALiH

制造商和技术参数 Manufacturer's Data and Design Characteristics

特性	Characteristics	合力HELI	合力HELI	合力HELI	合力HELI	
1.01 制造商	Manufacturer	合力HELI	合力HELI	合力HELI	合力HELI	
1.02 型号	Model	CBD15	CBD20	CBD15	CBD20	
1.03 配置号	Configuration number	A/BH	A/BH	A/BLiH	A/BLiH	
1.04 操作方式	Type of operation	步行式Pedestrian propelled	步行式Pedestrian propelled	步行式Pedestrian propelled	步行式Pedestrian propelled	
1.05 额定承载能力	Rated capacity	Q kg	1500	2000	1500	2000
1.06 载荷中心距	Load center distance	c mm	600	600	600	600
1.07 提升高度	Lift height	h3 mm	115	115	115	115
1.08 前悬距	Front overhang	x mm	915	915	915	915
1.09 轴距	Wheelbase	y mm	1256	1294	1197	1197
1.20 轮胎	Tyres					
2.01 轮胎类型	Tyre type		聚氨酯Polyurethane	聚氨酯Polyurethane	聚氨酯Polyurethane	聚氨酯Polyurethane
2.02 轮胎尺寸, 驱动轮	Tyre size, driving wheels	φ*w mm	φ210*75	φ210*75	φ210*75	φ210*75
2.03 轮胎尺寸, 承载轮	Tyre size, loading wheels	φ*w mm	2"φ80*61	2"φ80*61	2"φ80*61	2"φ80*61
2.04 轮胎尺寸, 辅助轮	Tyre size, additional wheels	φ*w mm	2"φ70*30 (选配Option)	2"φ70*30 (选配Option)	2"φ70*30 (选配Option)	2"φ70*30 (选配Option)
2.05 车轮数量, 前/后 (x=驱动轮)	Wheels, number front/rear (x=driven wheels)		1x/4 or 1x+2/4	1x/4 or 1x+2/4	1x/4 or 1x+2/4	1x/4 or 1x+2/4
2.06 轮距, 承载端	track width, loading side	b11 mm	395	530	395	530
3.01 尺寸	Dimensions					
3.01 整车长度	Overall length	L1 mm	1662	1698	1603	1603
3.02 整车宽度	Overall width	b1 mm	562	697	562	697
3.03 货叉尺寸	Fork dimension	s/ℓ mm	50*155*1150/1200	50*155*1150/1200	50*155*1150/1200	50*155*1150/1200
3.04 货叉外宽	Width of forks	b5 mm	550	685	550	685
3.05 货叉最低高度	Lowered height	h13 mm	80	80	80	80
3.06 轴距中心处离地间隙	Min. Ground clearance	m2 mm	30	30	30	30
3.07 操作位置手柄最小/最大高度	Height drawbar in driving position min./max	h14 mm	730/1182	730/1182	730/1182	730/1182
3.08 通道宽度: 1000x1200托盘 (1200跨货叉放置)	Aisle width with pallet 1000x1200 across forks	Ast mm	2235	2273	2175	2175
3.09 通道宽度: 800x1200托盘 (1200沿货叉放置)	Aisle width with pallet 800x1200 along forks	Ast mm	2122	2160	2062	2062
3.10 转弯半径	Min. Turning radius	Wa mm	1430	1468	1370	1370
性能	Performance Data					
4.01 行驶速度 (满载/空载)	Travel speed (laden/unladen)	km/h	4/4.5	4.5/5	4.5/5	4.5/5
4.02 升起速度 (满载/空载)	Lift speed (laden/unladen)	mm/s	28/40	20/37	28/40	20/37
4.03 下降速度 (满载/空载)	Lowering speed (laden/unladen)	mm/s	60/40	50/40	60/40	50/40
4.04 最大爬坡能力 (满载/空载)	Max. gradeability (laden/unladen)	%	6/16	6/16	6/16	6/16
4.05 制动类型	Service brake type		电磁制动Electromagnetic brake	电磁制动Electromagnetic brake	电磁制动Electromagnetic brake	电磁制动Electromagnetic brake
电池和充电器	Battery					
5.01 蓄电池电压/容量	Battery voltage/rated capacity	V/Ah	24V/65/85Ah	48V/(30/42Ah)	24V/(40/50/60Ah)	48V/(20/30Ah)
5.02 蓄电池重量 (±5%)	Battery weight	kg	30	40	8	12
5.03 充电器规格	Charger specification		24V/10Ah	48V/5Ah	24V/15Ah	48V/9Ah
电机和控制器	Motor and controller					
6.01 驱动电机功率 (S2-60min)	Driving motor powering (S2-60min)	kW	0.75	1	0.75	1
6.02 起升电机功率 (S3-15%)	Lifting motor powering (S3-15%)	kW	0.8	0.8	0.8	0.8
6.03 控制器	Controller		嘉鼎	前拓	嘉鼎	前拓
重量	Weight					
7.01 总重 (含电池)	Total weight (with battery)	kg	195/210	205/220	175/180	175/180
7.02 桥负载 (满载, 驱动轮/承载轮)	Axle load (laden, front/rear)	kg	511/1184	521/1188	631/1574	642/1578
7.03 桥负载 (空载, 前/后)	Axle load (unladen, front/rear)	kg	134/61	143/67	143/62	153/67
其他	Addition data					
8.01 驱动控制类型	Type of drive control		直流速度控制DC	直流速度控制DC	直流速度控制DC	直流速度控制DC
8.02 驾驶员耳边噪音水平	Sound pressure level at the driver's ear	dB(A)	≤69	≤69	≤69	≤69
8.03 转向类型	Steering type		机械转向Manual steering	机械转向Manual steering	机械转向Manual steering	机械转向Manual steering



安徽合力股份有限公司
ANHUI HELI CO., LTD.
地址 / 中国 合肥方兴大道668号
Add / No.668, FangXing Road, Hefei, China
邮编 (Post Code) / 230000

客服热线 (Customer Service Hotline) / 4001-600761
服务电话 (Service Tel) / +86-551-63689000, 63648005

* 本公司保留更改产品设计和规格的权利，恕不另行通知。
* Our products are subject to improvements and changes without notice.